

EXERCISE INDUCED PULMONARY HAEMORRHAGE

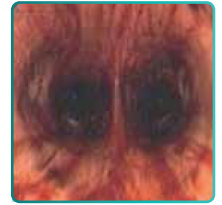


INGREDIENT FOCUS

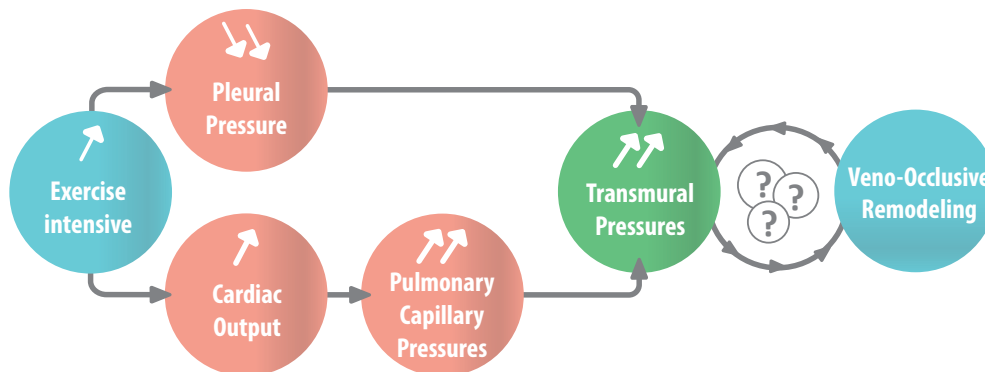
WHAT WE KNOW

KEY ELEMENTS

- EIPH is still an unexplained multifactorial disease. ⁽¹⁾
- Horses with moderate to severe EIPH have diminution of performance during a single race. ⁽¹⁾
- Furosemide, a doping loop diuretic is the only medication with high quality evidence that reduces the severity of EIPH. ⁽¹⁾
- There is moderate evidence that EIPH is a progressive disease. ⁽¹⁾



Blood at the carina



(1) - Consensus statement ACVIM, Nashville 2014

AUDEVARD SOLUTION : EKYBLEED

- ✓ **Orthosiphon** (*s.f. Orthosiphon stamineus*)
- ✓ **Dandelion** (*s.f. Taraxacum officinale*)
- ✓ **Horse chestnut** (*s.f. Aesculus hippocastanum*)
- ✓ **Red vine** (*s.f. Vitis vinifera*)
- ✓ **Sweet clover** (*s.f. Melilotus officinalis*)
- ✓ **Rosemary** (*s.f. Rosmarinus officinalis*)

USES

- 1 Nutritional support for the symptoms associated with airway disturbances during intense exercise
- 2 For extra breathing and vascular comfort



RESPIRATORY EFFORT

■ Description

The intensity of a horse's respiratory effort during a race can cause bleeding in the lungs and affect performance. This creates specific nutritional requirements in horses.

■ Purpose

EKYBLEED is a nutritional support formulated by AUDEVARD Laboratoires. It is designed to provide nutritional support to sport horses in preparation for increased respiratory effort.

■ Formula

Six carefully selected plants make up over 90% of the daily measure of EKYBLEED. This concentrated formula has been specifically developed for racehorses and has no doping effect.

■ Our advice

You can recommend EKYBLEED for both racehorses and other sport horses.

■ Daily allowance

1 measure = 35g

1 level measure per day for 2 weeks. EKYBLEED can be given all year round.

■ Professional format

490 g box - (EAN 3401196948959). Sufficient for up to 14 days' use in adult horses.

■ INGREDIENTS

Red vine (s), sweet clover (D), Orthosiphon (O), horse chestnut (P), sugar beet molasses, rosemary (R), dandelion (D), sucrose, microned corn.

crude fat, 9.6% crude ash, sodium 0.01%.

This product belongs to the complementary feed for horses category.



Product controlled in the context of
Audevard Anti-Doping Program.
Protocol details at www.audevard.com.